

## Parkway Room

The Parkway Room is the largest venue at the 1900 Building. It can be configured for performances, banquets, conferences, lectures, receptions, exhibitions, dances, etc. The room has high ceilings, full height glass and doors that open to the adjacent Courtyard. With excellent acoustics, the room can be 'tuned' according to the performances or events. Room lighting is zoned and dimmable. The Parkway Room has a fully integrated audio/video system, including drop-down projector and screen, as well as cameras and microphones to record and broadcast performances and events. Use of the 1900 Building's Hamburg Steinway concert grand piano is available upon special request. Chairs and tables, round, rectangular and hi-top are available on-site.

### CAPACITY

- Performance/Concert : 300
- Dinner/Reception: 224

### AVAILABILITY

- 6 hours of event time
- Green Room – available 3 hours prior to event time

### AUDIO / VISUAL

- Use of state-of-the-art A/V equipment (projector, sound system, recording devices)
- Google Fiber

### ADDITIONAL AMENITIES

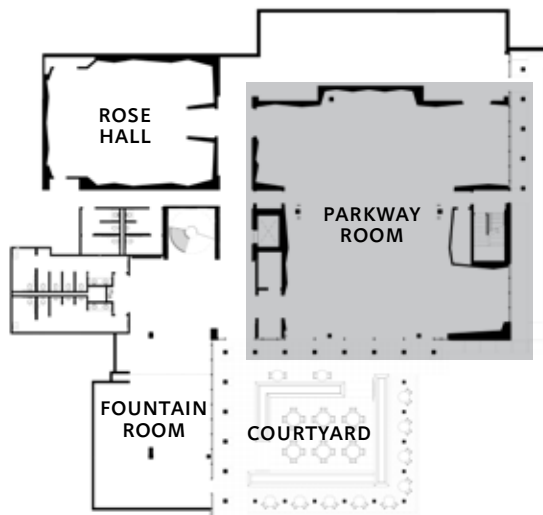
- Private & Covered Parking
- Hamburg Steinway grand piano (available upon special request)
- Janitorial after event
- Security Guard
- On-Site Coordinator
- On-Site Catering Kitchen for Preferred Caterers
- Option to tent courtyard for additional fee



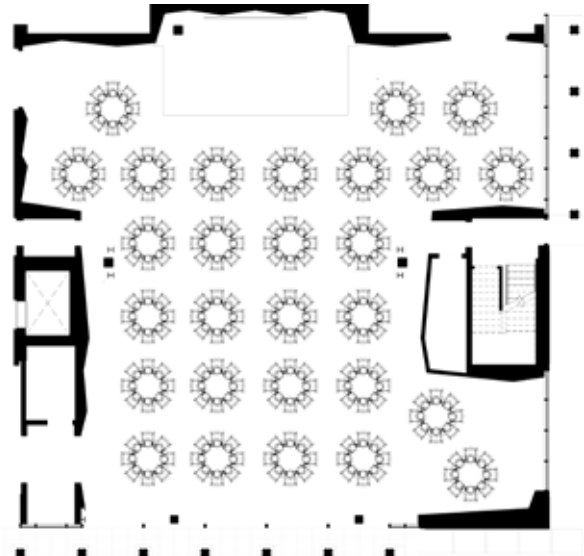
Entrance /Lobby



Banquet Configuration - Max Capacity: 224



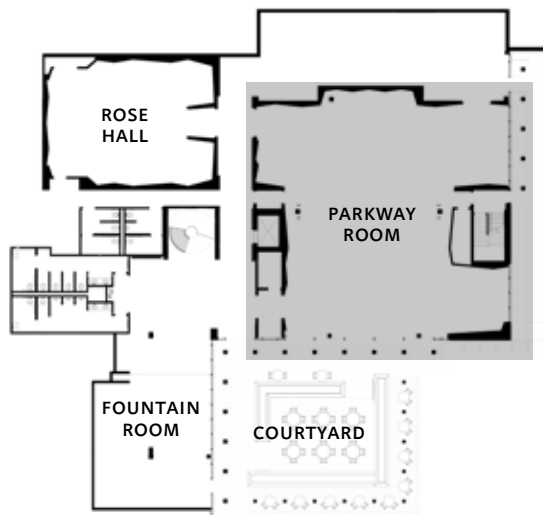
Key Plan



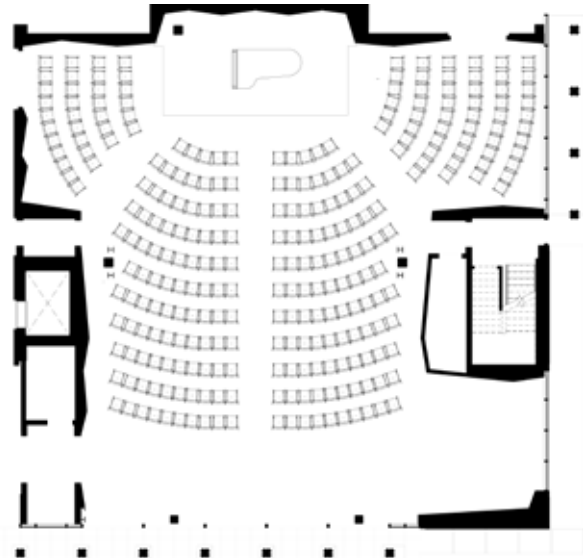
Parkway Room - Banquet Plan



Performance Configuration - Max Capacity: 300



Key Plan



Parkway Room - Performance Plan