

## Fountain Room

The Fountain Room has full height glass for beautiful views of the Courtyard and fountain. The room can be used for receptions, meetings, exhibitions, display or dining. With a direct glass door access to the Courtyard (and the Courtyard tent when in place), the room has a beautiful indoor/outdoor feel. Large moveable walnut walls can transform the space into a separate venue or can be opened to the 1st floor lobby for a larger space. Chairs and tables, rectangular and hi-top are available on-site.

### CAPACITY

- Fits up to approx. 100 for a reception

### AVAILABILITY

- 6 hours of event time
- Use of Green Room – available 3 hours prior to event

### AUDIO / VISUAL

- Speakers and sound system available
- Google Fiber

### ADDITIONAL AMENITIES

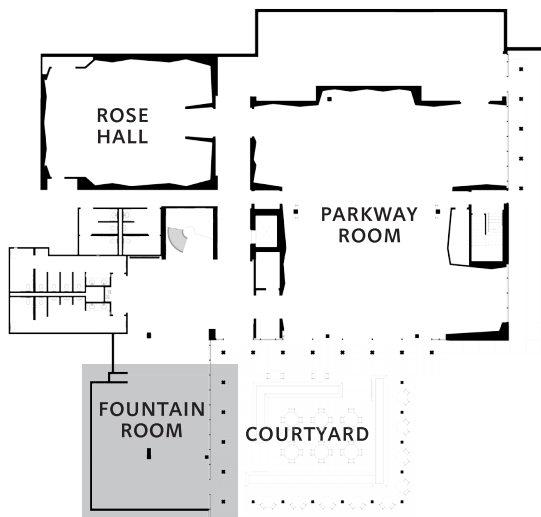
- Private & Covered Parking
- Janitorial after event
- Security Guard
- On-Site Coordinator
- On-Site Catering Kitchen for Preferred Caterers
- Option to tent courtyard for additional fee



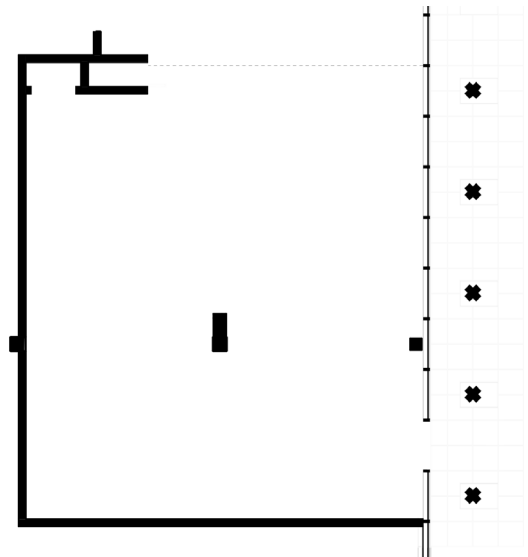
Entrance /Lobby



Facing East with Courtyard beyond



Key Plan



Fountain Room Plan