

16,051 SF
FOR LEASE



1900 SHAWNEE MISSION PARKWAY MISSION WOODS, KANSAS ICONIC CLASS A OFFICE BUILDING

FEATURES

- Up To 16,051 SF available
- Well-suited for multi-tenant use
- Lush landscaped areas, including Courtyard and Terraces
- High ceilings throughout
- Gorgeous, modernist entry lobby with marble walls
- Fitness room with showers and changing rooms
- Fiber optic cable to the building
- Excellent tenant signage visibility with 35,000 cars daily
- Recent renovations include: Floor-to-ceiling energy-efficient glass, new HVAC system, new passenger elevator, new roof, new restrooms, new fire sprinkler, new parking deck
- LEED Gold "Green Building" certification
- Ability to access The Restaurant at 1900 from within the building
- Conference and performances spaces
- Fantastic central location

THE BARNEY BUILDING
2000 SHAWNEE MISSION PARKWAY
SUITE 400
MISSION WOODS, KS 66205

For more information
please contact
STEVEN KARBANK
sk@karbank.com

816.221.4488
816.221.4494

KARBANK.COM

1900 SHAWNEE MISSION PARKWAY 16,051 SF FOR LEASE



THE BARNEY BUILDING
2000 SHAWNEE MISSION PARKWAY
SUITE 400
MISSION WOODS, KS 66205

For more information
please contact
STEVEN KARBANK
sk@karbank.com

816.221.4488
816.221.4494

KARBANK.COM

Information furnished regarding property is from sources deemed reliable but no warranty or representation is made as to the accuracy thereof and same is submitted subject to errors, omissions, prior sale or lease or withdrawal without notice.



KARBANK
 REAL ESTATE COMPANY

THE BARNEY BUILDING
 2000 SHAWNEE MISSION PARKWAY | SUITE 400
 MISSION WOODS, KANSAS 66205
 KARBANK.COM

ADDRESS **1900 Shawnee Mission Parkway
 Mission Woods, KS**

PLAN TYPE **Site Plan**

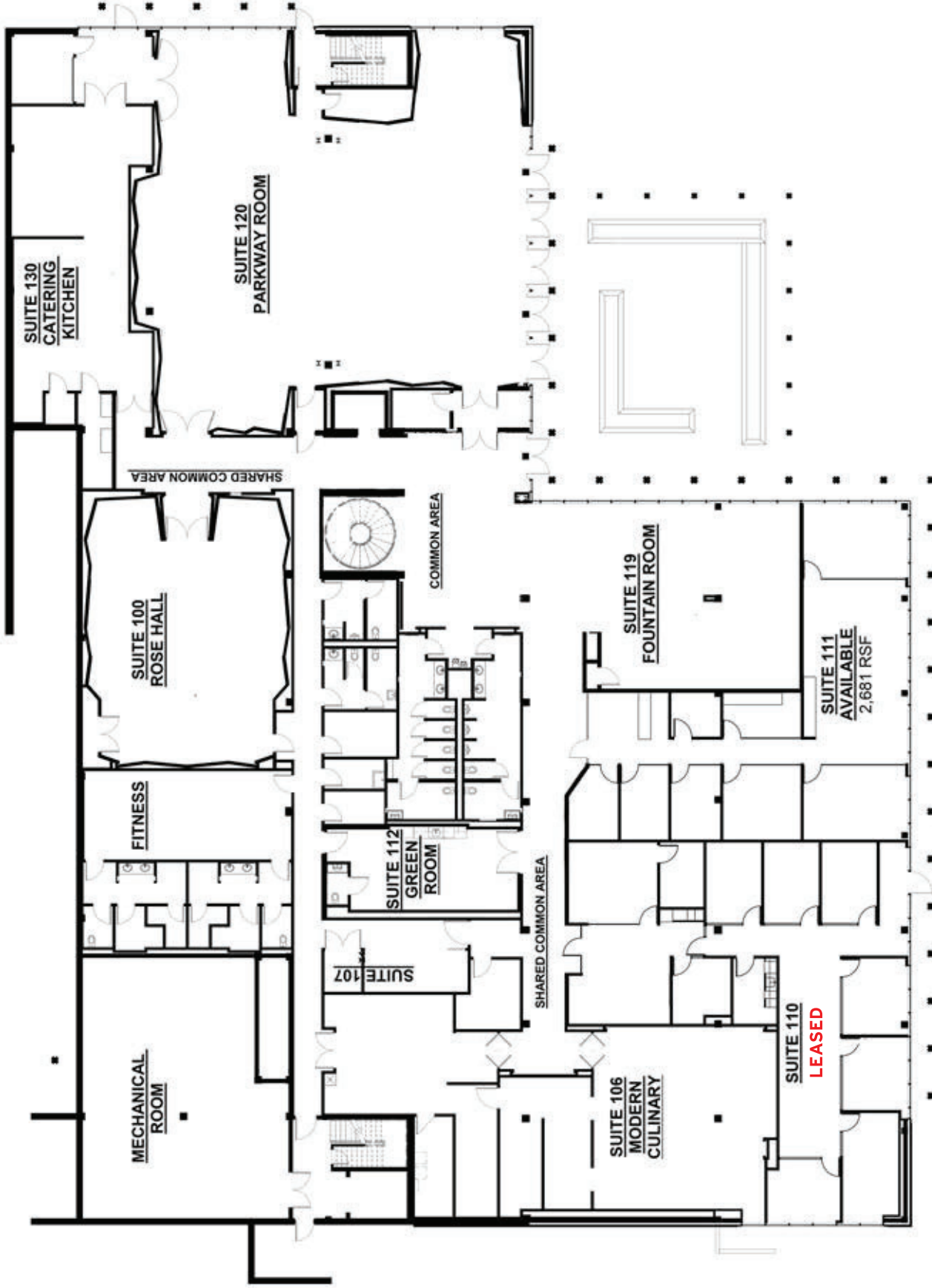
TOTAL SF
63,858



TOTAL OFFICE SF
BTS

DATE
4-21-2016



SCALE
N/A






 <p>THE BARNEY BUILDING 2000 SHAWNEE MISSION PARKWAY SUITE 400 MISSION WOODS, KANSAS 66205 KARBANK.COM</p>	ADDRESS 1900 Shawnee Mission Parkway Mission Woods, Kansas		
	PLAN TYPE First Floor Plan	TOTAL SF 2,681 SF TOTAL OFFICE SF	



 <p>THE BARNEY BUILDING 2000 SHAWNEE MISSION PARKWAY SUITE 400 MISSION WOODS, KANSAS 66205 KARBANK.COM</p>	ADDRESS 1900 Shawnee Mission Parkway Mission Woods, KS			
	PLAN TYPE Second Floor Plan	TOTAL SF 13,370 SF Available	DATE 2-7-2022	SCALE N/A
	TOTAL OFFICE SF BTS			



 <p>THE BARNEY BUILDING 2000 SHAWNEE MISSION PARKWAY SUITE 400 MISSION WOODS, KANSAS 66205 KARBANK.COM</p>	ADDRESS 1900 Shawnee Mission Parkway Mission Woods, KS		DATE 9-8-2021
	PLAN TYPE Third Floor Plan		SCALE N/A
		TOTAL SF NO AVAILABILITY	DATE
		TOTAL OFFICE SF BTS	SCALE N/A